

PSNWA Grand Competition



Best of Show : Stevie Wonder in Concert
by Rick Cash

The Photographic Society of Northwest Arkansas coordinates various photographic competitions through the year. These various competitions culminate in the County Fair Grand Competition. With nearly twenty categories, this largest of competitions provides members the maximum opportunity to exhibit their best work. Members submit images in such fields as : Architecture, Celebrity, Digital Manipulation, Fine Art, Journalism, Landscape, Macro, Nature, Sports, Still Life, Timed Exposure, Wedding, and more. The best of each category are then selected as a first place representatives, and are exhibited to nearly 60,000 individuals at the Washington County Fair.

Photographic Society
of Northwest Arkansas

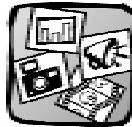
Interested in Membership?



Access to the PSNWA facility Darkroom and Studio.



Improve your Photography with Classes, Tours and Events

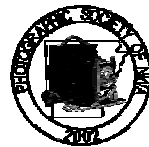


Membership in Photographic Society of America, with national and local publications.



Participate in Competitions, Exhibits, and Community Programs throughout Northwest Arkansas

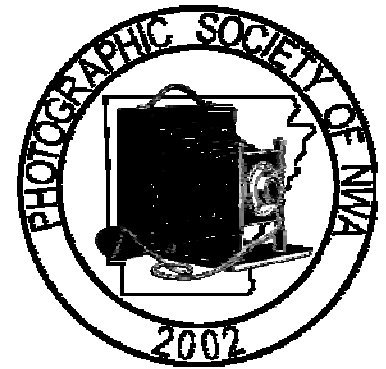
www.nwaphotoclub.org



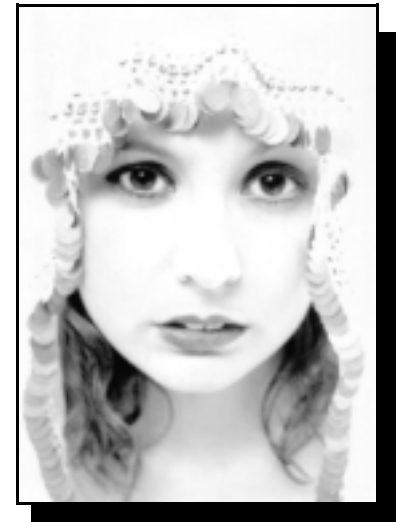
PSNWA

PHOTOGRAPHIC SOCIETY OF
NORTHWEST ARKANSAS
P.O. BOX 8837

Photographic Society
of Northwest Arkansas



County Fair Grand
Competition
2002



www.nwaphotoclub.org

Gallery
Exhibit

**Washington County
Fair Competition
and Exhibit**

**Photographic Society
of Northwest Arkansas**



J Baltz

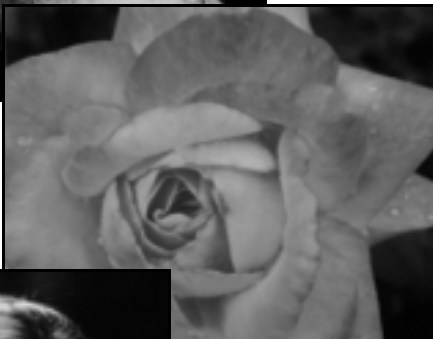


Mark Abram



Lena Hudson

**Promoting the art and science
of photography throughout
Northwest Arkansas.**



John Hamilton



Nakole Neumeier



John Hamilton